



BLUE BIRD

July 28, 2008

Dear Blue Bird Owner,

You will find enclosed a copy of Service Bulletin S08NJ regarding the air conditioning system on GSA 2008-09 model year Blue Bird All American rear engine buses.

If you experience any of the following conditions with the air conditioning system, you will need to perform the upgrades in the attached service bulletins issued by Mobile Climate Control.

1. Excessive cycling of the air conditioning compressor when the system is run under low load conditions.
2. The air conditioner clutch is disabled until reset by the driver or is reset when the vehicle is turned off.

Your buses affected by Service Bulletin S08NJ are identified by Blue Bird body number and vehicle identification number on the enclosed cover sheet.

Labor time allowed to install the Bitzer compressor harness upgrade (MCC #25-2657) is 0.2 hours (12 minutes) per bus. To receive the new compressor upgrade harness return the enclosed yellow cover sheet with your shipping address indicated to Blue Bird in one of the enclosed pink postage paid reply envelopes.

Labor time allowed to install the software upgrade (MCC #19-0462) is 0.2 hours (12 minutes) per bus. To obtain the software, you will need to contact Blue Bird Customer Service at 478-822-2218 or 478-822-2399.

A qualified repair technician should perform Service Bulletin S08NJ. When upgrades have been completed return the pink reply sheet in one of the enclosed pink postage paid envelopes to receive reimbursement for labor.

Service Bulletin S08NJ expires one (1) year from date of issue.

Should you have any questions concerning this bulletin, please contact your Blue Bird field service representative at 478-822-2218 or 478-822-2399.

Sincerely,

Bill Coleman
Blue Bird Corporation
478-822-2242

bill.coleman@blue-bird.com

BLUE BIRD CORPORATION

P.O. Box 937 • Fort Valley, Georgia 31030

Phone: (478) 825-2021



PRODUCT TECHNICAL BULLETIN

SERVICE ADVISORY

Date Issued: Jul 17, 2008

Subject: Blue Bird School Bus – GSA Bus extended compressor capacity control

Background:

Part I:

Bitzer Compressor Harness Upgrade: (MCC #25-2657)

Bitzer compressor is equipped with an unloader as capacity regulator. The harness upgrade will expand unloader control range. This will allow greater use of the air conditioning system under low load conditions.

Part II:

Inspecting internal wiring of unloader assembly

- Tools and system required:

- Philips screwdriver

- Parts to be ordered from MCC:

- MCC Kit # 25-2657: Upgrade wire harness



- Upgrade Procedure:

Part I: Instructions for installing upgrade harness:

1. Locate and disconnect the 4-way Weather-Pack connectors between compressor and body harness. It should be about 16 inches (400mm) away from the compressor clutch.
(Note: On body harness side, the connector has wires as A- 36(Blue); B-7(White); C-38(Brown) and D-37(Pink). And on the compressor harness side, the connector has wires as A-1(Blue); B-2(White); C-3(Brown) and D-4(Pink))
2. Plug the upgrade harness in (see figure 5).

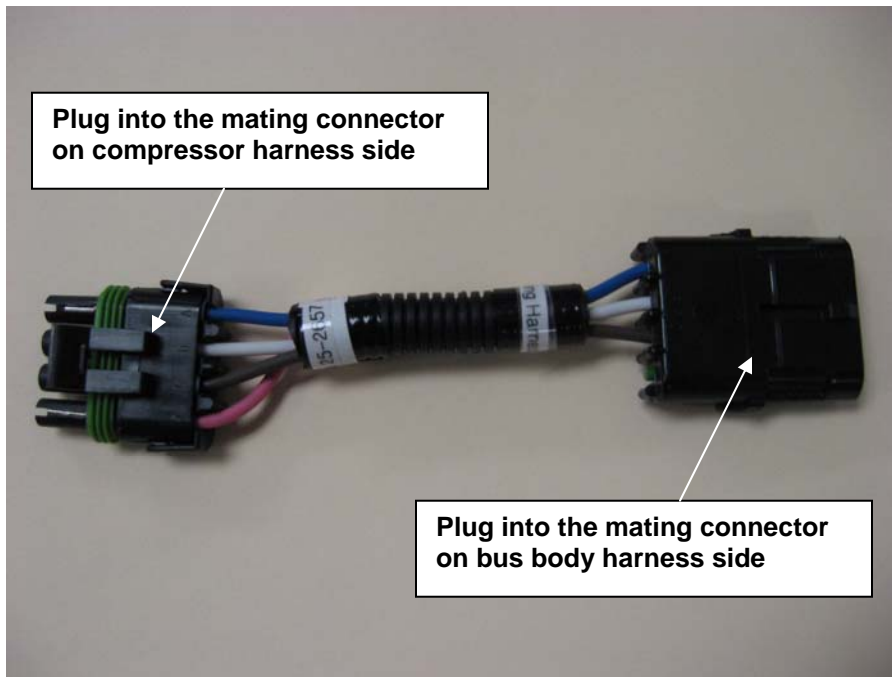


Figure 5

3. Use tie wraps to secure harness in place.



Part II: Instructions for inspecting unloader wires:

1. Disconnect the 2-way Weather-Pack connector between Unloader Assembly and Compressor wiring harness. Remove the Unloader Assembly from the compressor. (see figure 6)

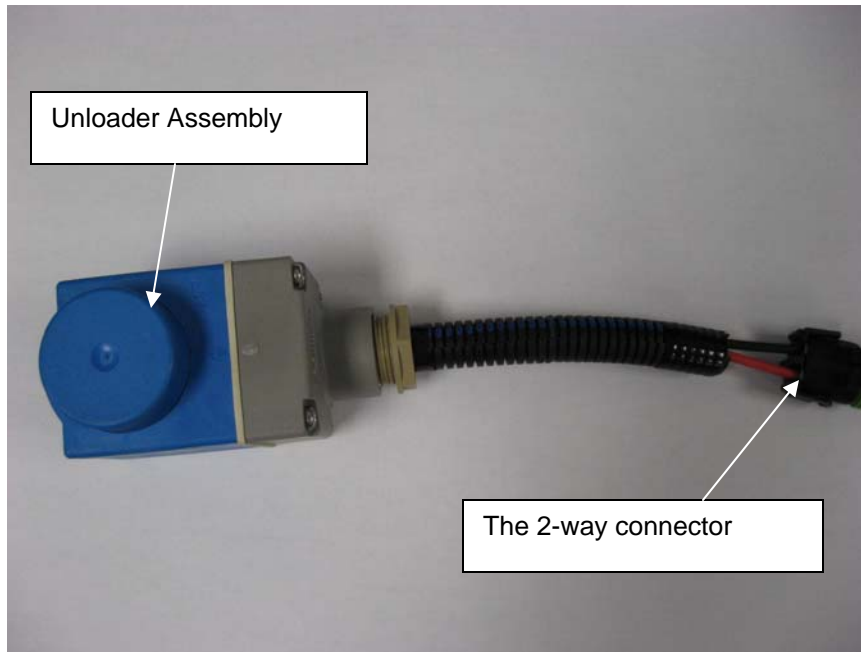


Figure 6

2. Loosen the four screws and remove the top portion of the assembly. (see figure 7)

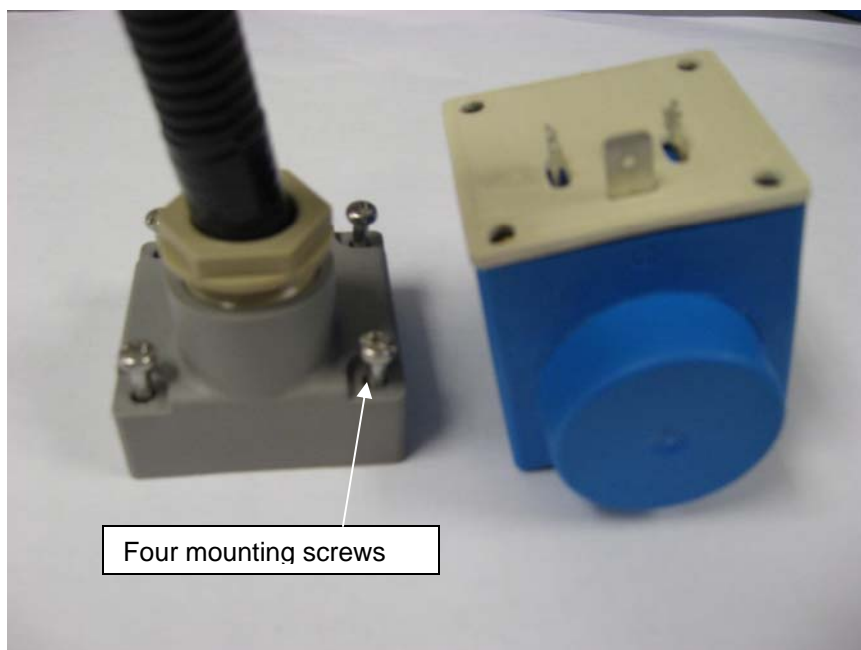


Figure 7



3. Ensure wires are properly inserted into position and use screwdriver to firmly tighten the wires in place. (see figure 8)

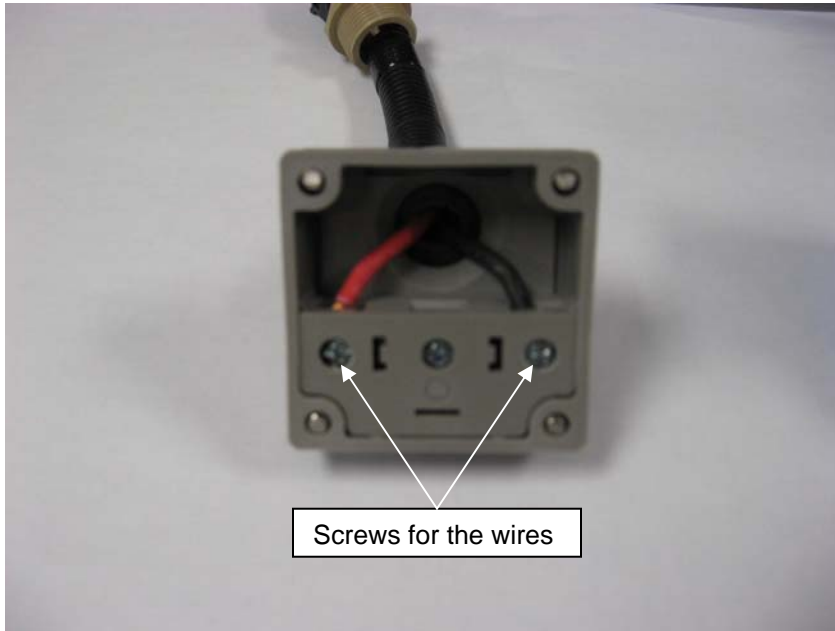


Figure 8

4. Re-assemble components and re-install on the compressor. Upgrade is complete.

Engineering Manager

Date

Director Customer Care

Date



PRODUCT TECHNICAL BULLETIN

SERVICE ADVISORY

Date Issued: Jul 17, 2008

Subject: Blue Bird School Bus – Nuisance low pressure cycling on GSA Buses

Background:

Software Upgrade: (MCC #19-0462)

The air conditioning systems on the current GSA buses with the Electronic Climate Control systems were designed around a specification requiring diagnostics and diagnostic feedback. This included a requirement to separately track incidences of Low Pressure and High pressure cutouts. In order to do this we installed a separate Low Pressure switch which is different from the standard Comfort Air System. The use of this switch can cause nuisance low pressure cycling when the system is run under low load conditions. In order to prevent repeat cycling caused by this switch MCC programmed a driver resettable latch in our software. It appears that this driver resettable latch is causing an issue for some customers with these buses in the field. We therefore propose a software update for the customers that have been experiencing the issue when they run under low load conditions.

Both front and rear systems operate independently and each pressure trip will shut down system for a minimum of 45 seconds.

**** Software Upgrade**

- Tools and system required:

- Laptop equipped with serial port
- Windows 2000 or Windows XP

- Parts to be ordered from MCC:

- MCC Kit # 19-0462: Software Upgrading Kit – 1 required per technician

- Upgrading Procedure:

Part I: Instructions for installing ECC DownLoader:

1. Insert ECC DownLoader Installation CD.
2. Double click the Setup.exe file.
3. Select installation folder.
4. Select "Next" button.
5. Wait for installation to complete.
6. Click "Close" button.

ECC DownLoader is now installed and an icon is placed on the desktop and in the "Programs" menu.



Part II: Instructions for downloading file to ECC:

1. Locate 9-in D-Sub connector (see figure 1) in wiring harness behind ECC under dashboard.



Figure 1

2. Attach MCC interface cable (35-0202) between laptop and ECC. (see figure 2)

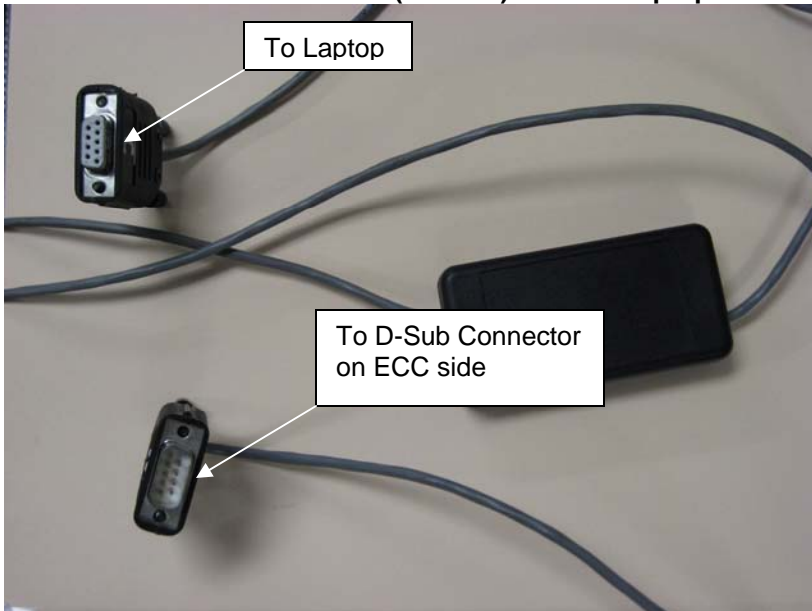


Figure 2 (MCC #35-0202)



3. Run MCC's ECC DownLoader software on laptop. (see figure 3)

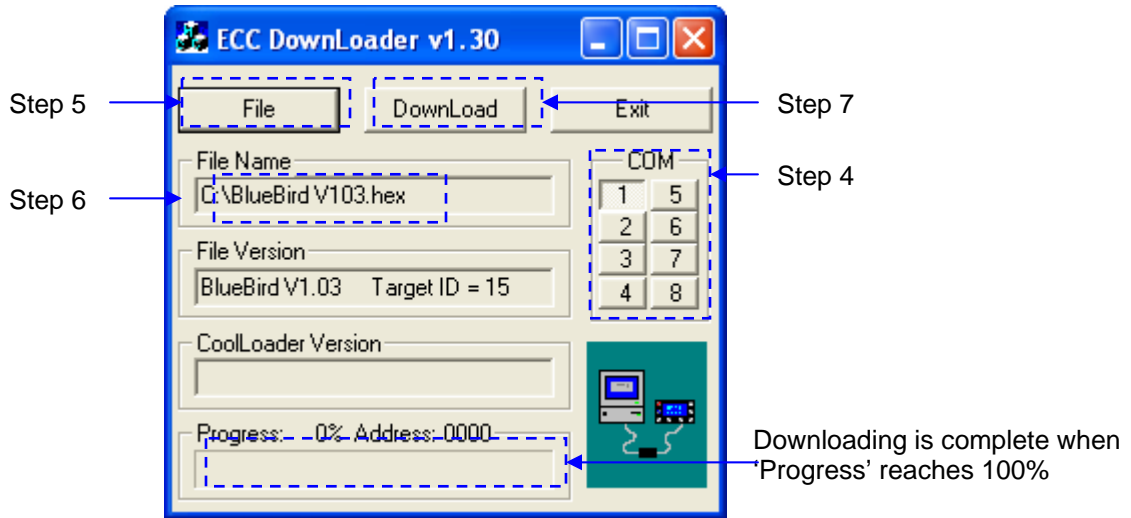


Figure 3

4. Select correct communication port (typically COM 1).
5. Click on the "File" button and a file dialog box will appear.
6. Select the appropriate file located on the provided CD - "BlueBird V103.hex"
7. With the ignition of the bus turned on, click on the "DownLoad" button.
8. Downloading will take approximately 20 seconds and the ECC DownLoader software will display progress. Once downloading is complete, ECC automatically returns main screen. (see figure 4)

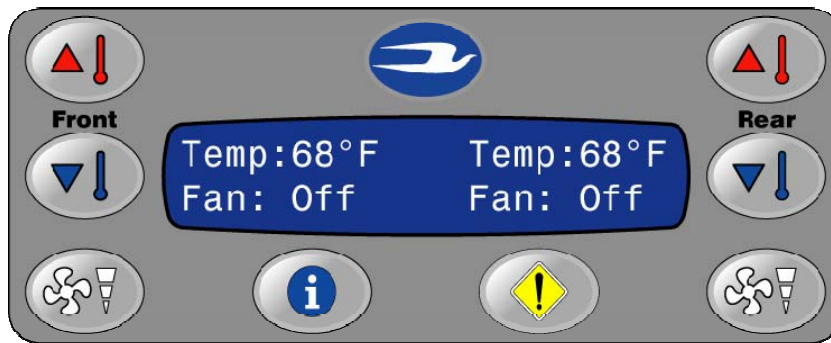


Figure 4

9. Upon successfully downloading, turn ignition off and disconnect communication cable.

Engineering Manager

Date

Director Customer Care

Date